



***Catalog 2017 of LED Light Bulbs  
that are 100% replicas  
of Incandescent Light Bulbs***

These bulbs will lower electric bill up to 90%



**an industry leader in providing the market with  
innovative, energy efficient, money saving LED lights.**

**All our LED Light Bulbs are Environmentally friendly  
Have No Infrared or UV radiation**

**Average lifetime of these bulbs is 10-20x longer than  
incandescent light bulbs and CFL bulbs.**

**Less pulsation/flicker, that makes light environment  
more safe for children and adults**

**Suitable for DIRECT replacement of incandescent, CFL  
bulbs with E12 (small), E26 (medium) bases**

## •Table of Contents:

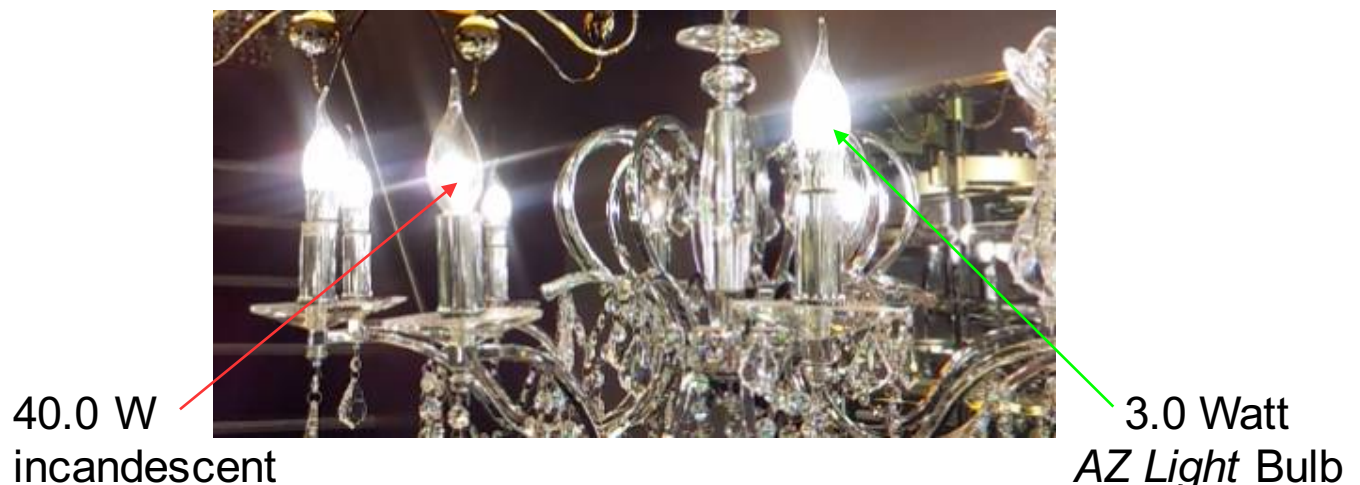
3. Description of features, benefits of our LED bulbs
4. Ordering codes and information
5. **A19** type, globe bulb, **3.5** Watt. Equivalent up to **40.0** Watt incandescent bulb
6. **A19** type, globe bulb, **6.5** Watt. Equivalent up to **60.0** Watt incandescent bulb
7. **A19** type, globe bulb with mirror **3.5** Watt. Equivalent up to **40.0** Watt incandescent bulb
8. **A19** type, globe bulb with mirror, **6.5** Watt. Equivalent up to **60.0** Watt incandescent bulb
9. **G80** type, large globe, bulb, **3.5** Watt. Equivalent up to **40.0** Watt incandescent bulb
10. **G80** type, large globe bulb, **6.5** Watt. Equivalent up to **60.0** Watt incandescent bulb
11. **R20** type, reflector bulb, **3.5** Watt. Equivalent up to **40.0** Watt incandescent bulb
12. **R25** type, reflector bulb, **5.5** Watt. Equivalent up to **45.0-55.0** Watt incandescent bulb
13. **BR30** type, reflector bulb, **6.5** Watt. Equivalent up to **65.0-75.0** Watt incandescent bulb
14. **B35C** type, candelabra bulb, **1.0** Watt. Equivalent up to **15.0** Watt incandescent bulb  
Regular tip
15. **B35C1** type, candelabra bulb, **1.0** Watt. Equivalent up to **15.0** Watt incandescent bulb  
Wind tip
16. **B35C** type, candelabra bulb, **2.0** Watt. Equivalent up to **25.0** Watt incandescent bulb  
Regular tip
17. **B35C1** type, candelabra bulb **2.0** Watt. Equivalent up to **25.0** Watt incandescent bulb  
Wind tip
18. **B35C** type, candelabra bulb **3.0** Watt. Equivalent up to **40.0** Watt incandescent bulb  
Regular tip
19. **B35C1** type, candelabra bulb **3.0** Watt. Equivalent up to **40.0** Watt incandescent bulb  
Wind tip
20. Example of savings
21. **PAR30** type, Short neck, 8,0 Watt. Equivalent up to **45.0-55.0** Watt incandescent bulb
21. **PAR30L** type, Long neck, 10,0 Watt. Equivalent up to **55.0-65.0** Watt incandescent bulb
21. **PAR38** type, Regular neck, 12,0 Watt. Equivalent up to **75.0-85.0** Watt incandescent bulb
21. Contact information

## Best LED bulbs on the market

### Our LED bulbs – Incandescent types are the BEST

These bulb are unique and have special features:

- 100% look and appearance as incandescent bulbs
- Direct replacement of incandescent and CFL bulbs
- Saves up to 90% of electricity (compare to incandescent)
- Highest lumen output – up to 115 Lm/Watt
- True 360 degree light beam for A19 and B35C/C1
- Same weight as incandescent – no extra support needed for light fixture
- No flickering – less fatigue for people and animals
- High Color Rendering Index – up to 94. Sun is 100
- Have dimmable option
- 3.0W of our bulb is equal up to 40.0W incandescent



<b>Ordering codes, how to read and order:</b>
<b>Example: AZLDS-B35C1-RT-E12-WB-1.0-CG-2.8K-US-OT</b>
<b>AZLDS</b> - products of AZ Light company, <b>LDS</b> - LED Incandescent type
<b>B35C1</b> - B35 - 35 mm diameter, C- candelabra type, 1 - wind tip
<b>RT</b> - RT - Regular tip, <b>WT</b> - Wind tip of bulb
<b>E12</b> - size of socket - E12, small
<b>WB</b> - base color, <b>WB</b> - white base, <b>SB</b> - Silver base
<b>CG</b> - Clear Glass, <b>FG</b> - Frosted glass
<b>2.8K</b> - color temperature - <b>2800K</b> ,
other optional - <b>2.4K/2.7/3.0/3.5/4.0/5.0K</b>
<b>US</b> - made for USA market - <b>120 VAC, 60 Hz</b>
<b>OT/NT</b> - technology code
<b>For other types of bulbs - same order rules, just different types:</b>
<b>R20</b> - Reflector type bulbs, small reflector
<b>R25</b> - Reflector type bulbs, medium size reflector
<b>BR30</b> - Reflector type bulbs, big size reflector
<b>PAR30</b> - Parabolic Aluminum Reflector type R30 bulbs, medium size reflector, front glass with micro lenses
<b>PAR30 L</b> - Parabolic Aluminum Reflector type R30 L bulbs, medium size reflector, front glass with micro lenses
<b>PAR38</b> - Parabolic Aluminum Reflector type R38 bulbs, big size reflector, front glass with micro lenses
<b>A19</b> - Globe type regular bulbs, 60 mm diameter
<b>G80</b> - Globe type big size bulbs, 80 mm diameter
<b>E26</b> - size of socket - E26, medium
<b>3.5</b> - 3.5 Watt of power, <b>5.5</b> - 5.5 Watt, <b>6.5</b> - 6.5 Watt
<b>CG</b> - Clear Glass, <b>FG</b> - Frosted Glass, <b>CG+SM</b> - Clear Glass + Silver Mirror
<b>2.8K</b> - color temperature - <b>2800K</b> ,
other are optional - <b>2.4K/2.7/3.0/3.5/4.0/5.0K</b>
<b>US</b> - made for USA market - <b>120 VAC</b>
<b>OT/NT</b> - technology code
<b>NPL type</b> - No Plastic ring. These bulbs are 100% replica of incandescent
NPL type bulbs are shorter by the size of plastic ring

## Fully glass, incandescent type A19 LED Bulb 3.5 Watt Equivalent up to 40.0 Watt incandescent bulb



NPL Type

Ordering Code:

**AZLDS-A19-NPL-E26-3.5-CG-2.8K-US-NT**



E26

### Bulb dimensions:

Overall Length (H): 4.25"/108mm  
Diameter (W): 2.36"/60mm

**Worldwide and USA patented**

### Key Features and Benefits:

- **100% replacement** of incandescent light bulb
- **Lowers electric** light bill up to **10-20 times** compared to incandescent light bulb
- **Same weight** as incandescent: **no extra support**
- **Very small** amount of heat produces
- **More** work hours - **25,000 Hours** Average Life time (Compared to incandescent: 1,000-2,000 hours)
- **Low** Pulsation light – **Less** eye fatigue, less stress
- **Free** from Ultraviolet and Infrared radiation
- **Free** from Mercury and Lead. **RoHS** certified
- **More** On/Off Switching cycles - 20000X+
- **Instant-On** with full light output
- **Less load** on electrical grid, **less** maintains

### General Characteristics:

Bulb type: Regular Globe A19  
Glass cover: Clear (Frosted optional)  
Cap base: E26 – Medium Base  
Weight: > 1 ½ ounce (> 45 gr.)  
Rated avg. life: > 25,000 hours  
(In use for 3 hours a day – 20 years+)

### Light Technical Characteristics:

Lumen output (Lm) : 350-420  
Lumen per Watt - Efficacy (Lm/W): 110  
Color T Code: 2200K - 5000K  
Beam Angle: True 360 degree

### Electrical Characteristics:

Wattage: 3.5 Watt  
Voltage: 120 VAC  
Frequency: 50-60 Hz  
Power Factor: > 0.6  
Lamp Current: 29 mA  
Dimmable: Available as an Option  
Starting Time: 0.5s

### Warnings and safety:

- Do not use in outdoor fixtures
- Not recommended for wet or damp locations
- Not for use in totally enclosed luminaires
- Before replacing, **turn off power** to avoid electrical shock or burn.

## Fully glass, incandescent type A19 LED Bulb 6.5 Watt Equivalent up to 60.0 Watt incandescent bulb



NPL Type

Ordering Code:

**AZLDS-A19-NPL-E26-6.5-CG-2.8K-US-NT**



E26

### Bulb dimensions:

Overall Length (H): 4.25"/108mm  
Diameter (W): 2.36"/60mm

**Worldwide and USA patented**

### Key Features and Benefits:

- **100% replacement** of incandescent light bulb
- **Lowers electric** light bill up to **10-20 times** compared to incandescent light bulb
- **Same weight** as incandescent: **no extra support**
- **Very small** amount of heat produces
- **More** work hours - **25,000 Hours** Average Life time (Compared to incandescent: 1,000-2,000 hours)
- **Low** Pulsation light – **Less** eye fatigue, less stress
- **Free** from Ultraviolet and Infrared radiation
- **Free** from Mercury and Lead. **RoHS** certified
- **More** On/Off Switching cycles - 20000X+
- **Instant-On** with full light output
- **Less load** on electrical grid, **less** maintains

### General Characteristics:

Bulb type: Regular Globe A19  
Glass cover: Clear (Frosted optional)  
Cap base: E26 – Medium Base  
Weight: > 1 ½ ounce (> 45 gr.)  
Rated avg. life: > 25,000 hours  
(In use for 3 hours a day – 20 years+)

### Light Technical Characteristics:

Lumen output (Lm) : 650-780  
Lumen per Watt - Efficacy (Lm/W): 110  
Color T Code: 2200K - 5000K  
Beam Angle: True 360 degree

### Electrical Characteristics:

Wattage: 6.5 Watt  
Voltage: 120 VAC  
Frequency: 50-60 Hz  
Power Factor: > 0.6  
Lamp Current: 55 mA  
Dimmable: Available as an Option  
Starting Time: 0.5s

### Warnings and safety:

- Do not use in outdoor fixtures
- Not recommended for wet or damp locations
- Not for use in totally enclosed luminaires
- Before replacing, **turn off power** to avoid electrical shock or burn.



## Fully glass, incandescent type A19 LED Bulb mirrored 3.5 Watt Equivalent up to 40.0 Watt incandescent bulb



Ordering Code:

**AZLDS-A19-NPL-E26-3.5-CG+SM-2.8K-US-NT**



E26

### Bulb dimensions:

Overall Length (H): 4.25"/108mm  
Diameter (W): 2.36"/60mm

**Worldwide and USA patented**

### Key Features and Benefits:

- **100% replacement** of incandescent light bulb
- **Lowers electric** light bill up to **10-20 times** compared to incandescent light bulb
- **Same weight** as incandescent: **no extra support**
- **Very small** amount of heat produces
- **More** work hours - **25,000 Hours** Average Life time (Compared to incandescent: 1,000-2,000 hours)
- **Low** Pulsation light – **Less** eye fatigue, less stress
- **Free** from Ultraviolet and Infrared radiation
- **Free** from Mercury and Lead. **RoHS** certified
- **More** On/Off Switching cycles - 20000X+
- **Instant-On** with full light output
- **Less load** on electrical grid, **less** maintains

### General Characteristics:

Bulb type: Regular Globe A19  
Glass cover: Clear + Silver Mirrored Top  
Cap base: E26 – Medium Base  
Weight: > 1 ½ ounce (> 45 gr.)  
Rated avg. life: > 25,000 hours  
(In use for 3 hours a day – 20 years+)

### Light Technical Characteristics:

Lumen output (Lm) : 350-420  
Lumen per Watt - Efficacy (Lm/W): 110  
Color T Code: 2200K - 5000K  
Beam Angle: 360 degree

### Electrical Characteristics:

Wattage: 3.5 Watt  
Voltage: 120 VAC  
Frequency: 50-60 Hz  
Power Factor: > 0.6  
Lamp Current: 28-30 mA  
Dimmable: Available as an Option  
Starting Time: 0.5s

### Warnings and safety:

- Do not use in outdoor fixtures
- Not recommended for wet or damp locations
- Not for use in totally enclosed luminaires
- Before replacing, **turn off power** to avoid electrical shock or burn.

## Fully glass, incandescent type A19 LED Bulb mirrored 6.5 Watt Equivalent up to 60.0 Watt incandescent bulb



Ordering Code:

**AZLDS-A19-NPL-E26-6.5-CG+SM-2.8K-US-NT**



E26

### Bulb dimensions:

Overall Length (H): 4.25"/108mm  
Diameter (W): 2.36"/60mm

**Worldwide and USA patented**

### Key Features and Benefits:

- **100% replacement** of incandescent light bulb
- **Lowers electric** light bill up to **10-20 times** compared to incandescent light bulb
- **Same weight** as incandescent: **no extra support**
- **Very small** amount of heat produces
- **More** work hours - **25,000 Hours** Average Life time (Compared to incandescent: 1,000-2,000 hours)
- **Low** Pulsation light – **Less** eye fatigue, less stress
- **Free** from Ultraviolet and Infrared radiation
- **Free** from Mercury and Lead. **RoHS** certified
- **More** On/Off Switching cycles - 20000X+
- **Instant-On** with full light output
- **Less load** on electrical grid, **less** maintains

### General Characteristics:

Bulb type: Regular Globe A19  
Glass cover: Clear + Silver Mirrored Top  
Cap base: E26 – Medium Base  
Weight: > 1 ½ ounce (> 45 gr.)  
Rated avg. life: > 25,000 hours  
(In use for 3 hours a day – 20 years+)

### Light Technical Characteristics:

Lumen output (Lm) : 650-780  
Lumen per Watt - Efficacy (Lm/W): 110  
Color T Code: 2200K - 5000K  
Beam Angle: 360 degree

### Electrical Characteristics:

Wattage: 6.5 Watt  
Voltage: 120 VAC  
Frequency: 50-60 Hz  
Power Factor: > 0.6  
Lamp Current: 55 mA  
Dimmable: Available as an Option  
Starting Time: 0.5s

### Warnings and safety:

- Do not use in outdoor fixtures
- Not recommended for wet or damp locations
- Not for use in totally enclosed luminaires
- Before replacing, **turn off power** to avoid electrical shock or burn.



## Fully glass, incandescent type G80 LED Bulb 3.5 Watt Equivalent up to 40.0 Watt incandescent bulb



NPL Type

Ordering Code:

**AZLDS-G80-NPL-E26-3.5-CG-2.8K-US-NT**



E26

### Bulb dimensions:

Overall Length (H): 4.375"/112mm  
Diameter (W): 3.13"/80mm

**Worldwide and USA patented**

### Key Features and Benefits:

- **100% replacement** of incandescent light bulb
- **Lowers electric** light bill up to **10-20 times** compared to incandescent light bulb
- **Same weight** as incandescent: **no extra support**
- **Very small** amount of heat produces
- **More** work hours - **25,000 Hours** Average Life time (Compared to incandescent: 1,000-2,000 hours)
- **Low** Pulsation light – **Less** eye fatigue, less stress
- **Free** from Ultraviolet and Infrared radiation
- **Free** from Mercury and Lead. **RoHS** certified
- **More** On/Off Switching cycles - 20000X+
- **Instant-On** with full light output
- **Less load** on electrical grid, **less** maintains

### General Characteristics:

Bulb type: Globe G80  
Glass cover: Clear (Frosted optional)  
Cap base: E26 – Medium Base  
Weight: > 1 3/4 ounce (> 55 gr.)  
Rated avg. life: > 25,000 hours  
(In use for 3 hours a day – 20 years+)

### Light Technical Characteristics:

Lumen output (Lm) : 350-420  
Lumen per Watt - Efficacy (Lm/W): 110  
Color T Code: 2200K - 5000K  
Beam Angle: True 360 degree

### Electrical Characteristics:

Wattage: 3.5 Watt  
Voltage: 120 VAC  
Frequency: 50-60 Hz  
Power Factor: > 0.6  
Lamp Current: 29 mA  
Dimmable: Available as an Option  
Starting Time: 0.5s

### Warnings and safety:

- Do not use in outdoor fixtures
- Not recommended for wet or damp locations
- Not for use in totally enclosed luminaires
- Before replacing, **turn off power** to avoid electrical shock or burn.

## Fully glass, incandescent type G80 LED Bulb 6.5 Watt Equivalent up to 65.0 Watt incandescent bulb



NPL Type

Ordering Code:

**AZLDS-G80-NPL-E26-6.5-CG-2.8K-US-NT**



E26

### Bulb dimensions:

Overall Length (H): 4.375"/112mm  
Diameter (W): 3.13"/80mm

**Worldwide and USA patented**

### Key Features and Benefits:

- **100% replacement** of incandescent light bulb
- **Lowers electric** light bill up to **10-20 times** compared to incandescent light bulb
- **Same weight** as incandescent: **no extra support**
- **Very small** amount of heat produces
- **More** work hours - **25,000 Hours** Average Life time (Compared to incandescent: 1,000-2,000 hours)
- **Low** Pulsation light – **Less** eye fatigue, less stress
- **Free** from Ultraviolet and Infrared radiation
- **Free** from Mercury and Lead. **RoHS** certified
- **More** On/Off Switching cycles - 20000X+
- **Instant-On** with full light output
- **Less load** on electrical grid, **less** maintains

### General Characteristics:

Bulb type: Globe G80  
Glass cover: Clear (Frosted optional)  
Cap base: E26 – Medium Base  
Weight: > 1 3/4 ounce (> 55 gr.)  
Rated avg. life: > 25,000 hours  
(In use for 3 hours a day – 20 years+)

### Light Technical Characteristics:

Lumen output (Lm) : 650-780  
Lumen per Watt - Efficacy (Lm/W): 110  
Color T Code: 2200K - 5000K  
Beam Angle: True 360 degree

### Electrical Characteristics:

Wattage: 6.5 Watt  
Voltage: 120 VAC  
Frequency: 50-60 Hz  
Power Factor: > 0.6  
Lamp Current: 55 mA  
Dimmable: Available as an Option  
Starting Time: 0.5s

### Warnings and safety:

- Do not use in outdoor fixtures
- Not recommended for wet or damp locations
- Not for use in totally enclosed luminaires
- Before replacing, **turn off power** to avoid electrical shock or burn.

## Fully glass, incandescent type R20 LED Bulb 3.5 Watt Equivalent up to 40.0 Watt incandescent bulb



NPL Type

Ordering Code:

**AZLDS-R20-NPL-E26-3.5-FRG-3.0K-US-NT**



E26

### Bulb dimensions:

Overall Length (H): 3.94"/100mm  
Diameter (W): 2.5"/63mm

**Worldwide and USA patented**

### Key Features and Benefits:

- **100% replacement** of incandescent light bulb
- **Lowers electric** light bill up to **10-20 times** compared to incandescent light bulb
- **Same weight** as incandescent: **no extra support**
- **Very small** amount of heat produces
- **More** work hours - **25,000 Hours** Average Life time (Compared to incandescent: 1,000-2,000 hours)
- **Low** Pulsation light – **Less** eye fatigue, less stress
- **Free** from Ultraviolet and Infrared radiation
- **Free** from Mercury and Lead. **RoHS** certified
- **More** On/Off Switching cycles - 20000X+
- **Instant-On** with full light output
- **Less load** on electrical grid, **less** maintains

### General Characteristics:

Bulb type: Reflector R20  
Glass cover: Frosted  
Cap base: E26 - Medium Base  
Weight: > 1 ½ ounce (> 45 gr.)  
Rated avg. life: > 25,000 hours  
(In use for 3 hours a day – 20 years+)

### Light Technical Characteristics:

Lumen output (Lm) : 350-420  
Lumen per Watt - Efficacy (Lm/W): 95  
Color T Code: 2200K - 5000K  
Beam Angle: 120 degree

### Electrical Characteristics:

Wattage: 3.5 Watt  
Voltage: 120 VAC  
Frequency: 50-60 Hz  
Power Factor: > 0.6  
Lamp Current: 29 mA  
Dimmable: Available as an Option  
Starting Time: 0.5s

### Warnings and safety:

- Do not use in outdoor fixtures
- Not recommended for wet or damp locations
- Not for use in totally enclosed luminaires
- Before replacing, **turn off power** to avoid electrical shock or burn.

## Fully glass, incandescent type R25 LED Bulb 5.5 Watt Equivalent up to 45.0-55.0 Watt incandescent bulb



Ordering Code:

**AZLDS-R25-NPL-E26-5.5-FRG-3.0K-US-NT**



E26

### Bulb dimensions:

Overall Length (H): 4.375"/112mm  
Diameter (W): 3.13"/80mm

**Worldwide and USA patented**

### Key Features and Benefits:

- **100% replacement** of incandescent light bulb
- **Lowers electric** light bill up to **10-20 times** compared to incandescent light bulb
- **Same weight** as incandescent: **no extra support**
- **Very small** amount of heat produces
- **More** work hours - **25,000 Hours** Average Life time (Compared to incandescent: 1,000-2,000 hours)
- **Low** Pulsation light – **Less** eye fatigue, less stress
- **Free** from Ultraviolet and Infrared radiation
- **Free** from Mercury and Lead. **RoHS** certified
- **More** On/Off Switching cycles - 20000X+
- **Instant-On** with full light output
- **Less load** on electrical grid, **less** maintains

### General Characteristics:

Bulb type: Reflector R25  
Glass cover: Frosted  
Cap base: E26 – Medium Base  
Weight: > 1 3/4 ounce (> 55 gr.)  
Rated avg. life: > 25,000 hours  
(In use for 3 hours a day – 20 years+)

### Light Technical Characteristics:

Lumen output (Lm) : 500-550  
Lumen per Watt - Efficacy (Lm/W): 95  
Color T Code: 2200K - 5000K  
Beam Angle: 120 degree

### Electrical Characteristics:

Wattage: 5.5 Watt  
Voltage: 120 VAC  
Frequency: 50-60 Hz  
Power Factor: > 0.6  
Lamp Current: 46 mA  
Dimmable: Available as an Option  
Starting Time: 0.5s

### Warnings and safety:

- Do not use in outdoor fixtures
- Not recommended for wet or damp locations
- Not for use in totally enclosed luminaires
- Before replacing, **turn off power** to avoid electrical shock or burn.

## Fully glass, incandescent type BR30 LED Bulb 6.5 Watt Equivalent up to 65.0-75.0 Watt incandescent bulb



NPL Type

Ordering Code:

**AZLDS-BR30-NPL/PL-E26-6.5-FRG-3.0K-US-NT**



E26

### Bulb dimensions:

Overall Length (H): 5.2"/132mm  
Diameter (W): 3.75"/95mm

**Worldwide and USA patented**

### Key Features and Benefits:

- **100% replacement** of incandescent light bulb
- **Lowers electric** light bill up to **10-20 times** compared to incandescent light bulb
- **Same weight** as incandescent: **no extra support**
- **Very small** amount of heat produces
- **More** work hours - **25,000 Hours** Average Life time (Compared to incandescent: 1,000-2,000 hours)
- **Low** Pulsation light – **Less** eye fatigue, less stress
- **Free** from Ultraviolet and Infrared radiation
- **Free** from Mercury and Lead. **RoHS** certified
- **More** On/Off Switching cycles - 20000X+
- **Instant-On** with full light output
- **Less load** on electrical grid, **less** maintains

### General Characteristics:

Bulb type: Reflector  
Glass cover: Frosted  
Cap base: E26 – Medium Base  
Weight: > 2 ounce (> 65 gr.)  
Rated avg. life: > 25,000 hours  
(In use for 3 hours a day – 20 years+)

### Light Technical Characteristics:

Lumen output (Lm) : 560-680  
Lumen per Watt - Efficacy (Lm/W): 95  
Color T Code: 2200K - 5000K  
Beam Angle: 120 degree

### Electrical Characteristics:

Wattage: 6.5 Watt  
Voltage: 120 VAC  
Frequency: 50-60 Hz  
Power Factor: > 0.6  
Lamp Current: 55 mA  
Dimmable: Available as an Option  
Starting Time: 0.5s

### Warnings and safety:

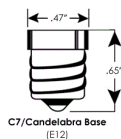
- Do not use in outdoor fixtures
- Not recommended for wet or damp locations
- Not for use in totally enclosed luminaires
- Before replacing, **turn off power** to avoid electrical shock or burn.

## Fully glass, incandescent type B35C LED Bulb 1.0 Watt Equivalent up to 15.0 Watt incandescent bulb



Ordering Code:

**AZLDS-B35C1-RT-E12-WB-1.0-CG-2.8K-US-OT**



### Bulb dimensions:

Overall Length (H): 4.65"/118 mm  
Diameter (W): 1.38"/35 mm

**Worldwide and USA patented**

### Key Features and Benefits:

- **100% replacement** of incandescent light bulb
- **Lowers electric** light bill up to **10-20 times** compared to incandescent light bulb
- **Same weight** as incandescent: **no extra support**
- **Very small** amount of heat produces
- **More** work hours - **25,000 Hours** Average Life time (Compared to incandescent: 1,000-2,000 hours)
- **Low** Pulsation light – **Less** eye fatigue, less stress
- **Free** from Ultraviolet and Infrared radiation
- **Free** from Mercury and Lead. **RoHS** certified
- **More** On/Off Switching cycles - 20000X+
- **Instant-On** with full light output
- **Less load** on electrical grid, **less** maintains

### General Characteristics:

Bulb type: Candelabra  
Glass cover: Clear (Frosted optional)  
Cap base: E12 – Small Base  
Tip type: Regular Tip  
Rated avg. life: > 25,000 hours  
(In use for 3 hours a day – 20 years+)

### Light Technical Characteristics:

Lumen output (Lm) : 100-110  
Lumen per Watt - Efficacy (Lm/W): 110  
Color T Code: 2200K - 5000K  
Beam Angle: 330 degree

### Electrical Characteristics:

Wattage: 1.0 Watt  
Voltage: 120 VAC  
Frequency: 50-60 Hz  
Power Factor: > 0.6  
Lamp Current: 12 mA  
Dimmable: Available as an Option  
Starting Time: 0.5s

### Warnings and safety:

- Do not use in outdoor fixtures
- Not recommended for wet or damp locations
- Not for use in totally enclosed luminaires
- Before replacing, **turn off power** to avoid electrical shock or burn.

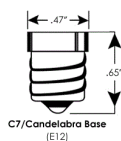


## Fully glass, incandescent type B35C1 LED Bulb 1.0 Watt Equivalent up to 15.0 Watt incandescent bulb



Ordering Code:

**AZLDS-B35C1-WT-E12-WB-1.0-CG-2.8K-US-OT**



### Bulb dimensions:

Overall Length (H): 5.63"/143mm  
Diameter (W): 1.38"/35mm

**Worldwide and USA patented**

### Key Features and Benefits:

- **100% replacement** of incandescent light bulb
- **Lowers electric** light bill up to **10-20 times** compared to incandescent light bulb
- **Same weight** as incandescent: **no extra support**
- **Very small** amount of heat produces
- **More** work hours - **25,000 Hours** Average Life time (Compared to incandescent: 1,000-2,000 hours)
- **Low** Pulsation light – **Less** eye fatigue, less stress
- **Free** from Ultraviolet and Infrared radiation
- **Free** from Mercury and Lead. **RoHS** certified
- **More** On/Off Switching cycles - 20000X+
- **Instant-On** with full light output
- **Less load** on electrical grid, **less** maintains

### General Characteristics:

Bulb type: Candelabra  
Glass cover: Clear (Frosted optional)  
Cap base: E12 – Small Base  
Tip type: Wind Tip  
Rated avg. life: > 25,000 hours  
(In use for 3 hours a day – 20 years+)

### Light Technical Characteristics:

Lumen output (Lm) : 100-110  
Lumen per Watt - Efficacy (Lm/W): 110  
Color T Code: 2200K - 5000K  
Beam Angle: 330 degree

### Electrical Characteristics:

Wattage: 1.0 Watt  
Voltage: 120 VAC  
Frequency: 50-60 Hz  
Power Factor: > 0.6  
Lamp Current: 10 mA  
Dimmable: Available as an Option  
Starting Time: 0.5s

### Warnings and safety:

- Do not use in outdoor fixtures
- Not recommended for wet or damp locations
- Not for use in totally enclosed luminaires
- Before replacing, **turn off power** to avoid electrical shock or burn.

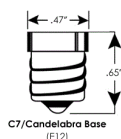
## Fully glass, incandescent type B35C LED Bulb 2.0 Watt Equivalent up to 25.0 Watt incandescent bulb



NPL Type

Ordering Code:

**AZLDS-B35C-RT-E12-WB-2.0-CG-2.8K-US-OT**



C7/Candelabra Base (E12)

### Bulb dimensions:

Overall Length (H): 4.65"/118mm  
Diameter (W): 1.38"/35mm

**Worldwide and USA patented**

### Key Features and Benefits:

- **100% replacement** of incandescent light bulb
- **Lowers electric** light bill up to **10-20 times** compared to incandescent light bulb
- **Same weight** as incandescent: **no extra support**
- **Very small** amount of heat produces
- **More** work hours - **25,000 Hours** Average Life time (Compared to incandescent: 1,000-2,000 hours)
- **Low** Pulsation light – **Less** eye fatigue, less stress
- **Free** from Ultraviolet and Infrared radiation
- **Free** from Mercury and Lead. **RoHS** certified
- **More** On/Off Switching cycles - 20000X+
- **Instant-On** with full light output
- **Less load** on electrical grid, **less** maintains

### General Characteristics:

Bulb type: Candelabra  
Glass cover: Clear (Frosted optional)  
Cap base: E12 – Small Base  
Tip type: Regular Tip  
Rated avg. life: > 25,000 hours  
(In use for 3 hours a day – 20 years+)

### Light Technical Characteristics:

Lumen output (Lm) : 200-220  
Lumen per Watt - Efficacy (Lm/W): 110  
Color T Code: 2200K - 5000K  
Beam Angle: 330 degree

### Electrical Characteristics:

Wattage: 2.0 Watt  
Voltage: 120 VAC  
Frequency: 50-60 Hz  
Power Factor: > 0.6  
Lamp Current: 17 mA  
Dimmable: Available as an Option  
Starting Time: 0.5s

### Warnings and safety:

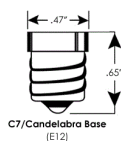
- Do not use in outdoor fixtures
- Not recommended for wet or damp locations
- Not for use in totally enclosed luminaires
- Before replacing, **turn off power** to avoid electrical shock or burn.

## Fully glass, incandescent type B35C1 LED Bulb 2.0 Watt Equivalent up to 25.0 Watt incandescent bulb



Ordering Code:

**AZLDS-B35C1-WT-E12-SB-2.0-CG-2.8K-US-OT**



### Bulb dimensions:

Overall Length (H): 5.63"/143mm  
Diameter (W): 1.38"/35mm

**Worldwide and USA patented**

### Key Features and Benefits:

- **100% replacement** of incandescent light bulb
- **Lowers electric** light bill up to **10-20 times** compared to incandescent light bulb
- **Same weight** as incandescent: **no extra support**
- **Very small** amount of heat produces
- **More** work hours - **25,000 Hours** Average Life time (Compared to incandescent: 1,000-2,000 hours)
- **Low** Pulsation light – **Less** eye fatigue, less stress
- **Free** from Ultraviolet and Infrared radiation
- **Free** from Mercury and Lead. **RoHS** certified
- **More** On/Off Switching cycles - 20000X+
- **Instant-On** with full light output
- **Less load** on electrical grid, **less** maintains

### General Characteristics:

Bulb type: Candelabra  
Glass cover: Clear (Frosted optional)  
Cap base: E12 – Small Base  
Tip type: Wind Tip  
Rated avg. life: > 25,000 hours  
(In use for 3 hours a day – 20 years+)

### Light Technical Characteristics:

Lumen output (Lm) : 200-220  
Lumen per Watt - Efficacy (Lm/W): 110  
Color T Code: 2200K - 5000K  
Beam Angle: 330degree

### Electrical Characteristics:

Wattage: 2.0 Watt  
Voltage: 120 VAC  
Frequency: 50-60 Hz  
Power Factor: > 0.6  
Lamp Current: 17 mA  
Dimmable: Available as an Option  
Starting Time: 0.5s

### Warnings and safety:

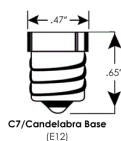
- Do not use in outdoor fixtures
- Not recommended for wet or damp locations
- Not for use in totally enclosed luminaires
- Before replacing, **turn off power** to avoid electrical shock or burn.

## Fully glass, incandescent type B35C LED Bulb 3.0 Watt Equivalent up to 40.0 Watt incandescent bulb



Ordering Code:

**AZLDS-B35C-RT-E12-SB-3.0-CG-3.0K-US-OT**



### Bulb dimensions:

Overall Length (H): 4.65"/118mm  
Diameter (W): 1.38"/35mm

**Worldwide and USA patented**

### Key Features and Benefits:

- **100% replacement** of incandescent light bulb
- **Lowers electric** light bill up to **10-20 times** compared to incandescent light bulb
- **Same weight** as incandescent: **no extra support**
- **Very small** amount of heat produces
- **More** work hours - **25,000 Hours** Average Life time (Compared to incandescent: 1,000-2,000 hours)
- **Low** Pulsation light – **Less** eye fatigue, less stress
- **Free** from Ultraviolet and Infrared radiation
- **Free** from Mercury and Lead. **RoHS** certified
- **More** On/Off Switching cycles - 20000X+
- **Instant-On** with full light output
- **Less load** on electrical grid, **less** maintains

### General Characteristics:

Bulb type: Candelabra  
Glass cover: Clear (Frosted optional)  
Cap base: E12 – Small Base  
Tip type: Regular Tip  
Rated avg. life: > 25,000 hours  
(In use for 3 hours a day – 20 years+)

### Light Technical Characteristics:

Lumen output (Lm) : 320-350  
Lumen per Watt - Efficacy (Lm/W): 110  
Color T Code: 2200K - 5000K  
Beam Angle: 330 degrees

### Electrical Characteristics:

Wattage: 3.0 Watt  
Voltage: 120 VAC  
Frequency: 50-60 Hz  
Power Factor: > 0.6  
Lamp Current: 25 mA  
Dimmable: Available as an Option  
Starting Time: 0.5s

### Warnings and safety:

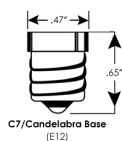
- Do not use in outdoor fixtures
- Not recommended for wet or damp locations
- Not for use in totally enclosed luminaries
- Before replacing, **turn off power** to avoid electrical shock or burn.

## Fully glass, incandescent type B35C1 LED Bulb 3.0 Watt Equivalent up to 40.0 Watt incandescent bulb



Ordering Code:

**AZLDS-B35C1-WT-E12-SB-3.0-CG-3.0K-US-OT**



### Bulb dimensions:

Overall Length (H): 5.63"/143mm  
Diameter (W): 1.38"/35mm

**Worldwide and USA patented**

### Key Features and Benefits:

- **100% replacement** of incandescent light bulb
- **Lowers electric** light bill up to **10-20 times** compared to incandescent light bulb
- **Same weight** as incandescent: **no extra support**
- **Very small** amount of heat produces
- **More** work hours - **25,000 Hours** Average Life time (Compared to incandescent: 1,000-2,000 hours)
- **Low** Pulsation light – **Less** eye fatigue, less stress
- **Free** from Ultraviolet and Infrared radiation
- **Free** from Mercury and Lead. **RoHS** certified
- **More** On/Off Switching cycles - 20000X+
- **Instant-On** with full light output
- **Less load** on electrical grid, **less** maintains

### General Characteristics:

Bulb type: Candelabra  
Glass cover: Clear (Frosted optional)  
Cap base: E12 – Small Base  
Tip type: Wind Tip  
Rated avg. life: > 25,000 hours  
(In use for 3 hours a day – 20 years+)

### Light Technical Characteristics:

Lumen output (Lm) : 320-350  
Lumen per Watt - Efficacy (Lm/W): 110  
Color T Code: 2200K - 5000K  
Beam Angle: 330 degrees

### Electrical Characteristics:

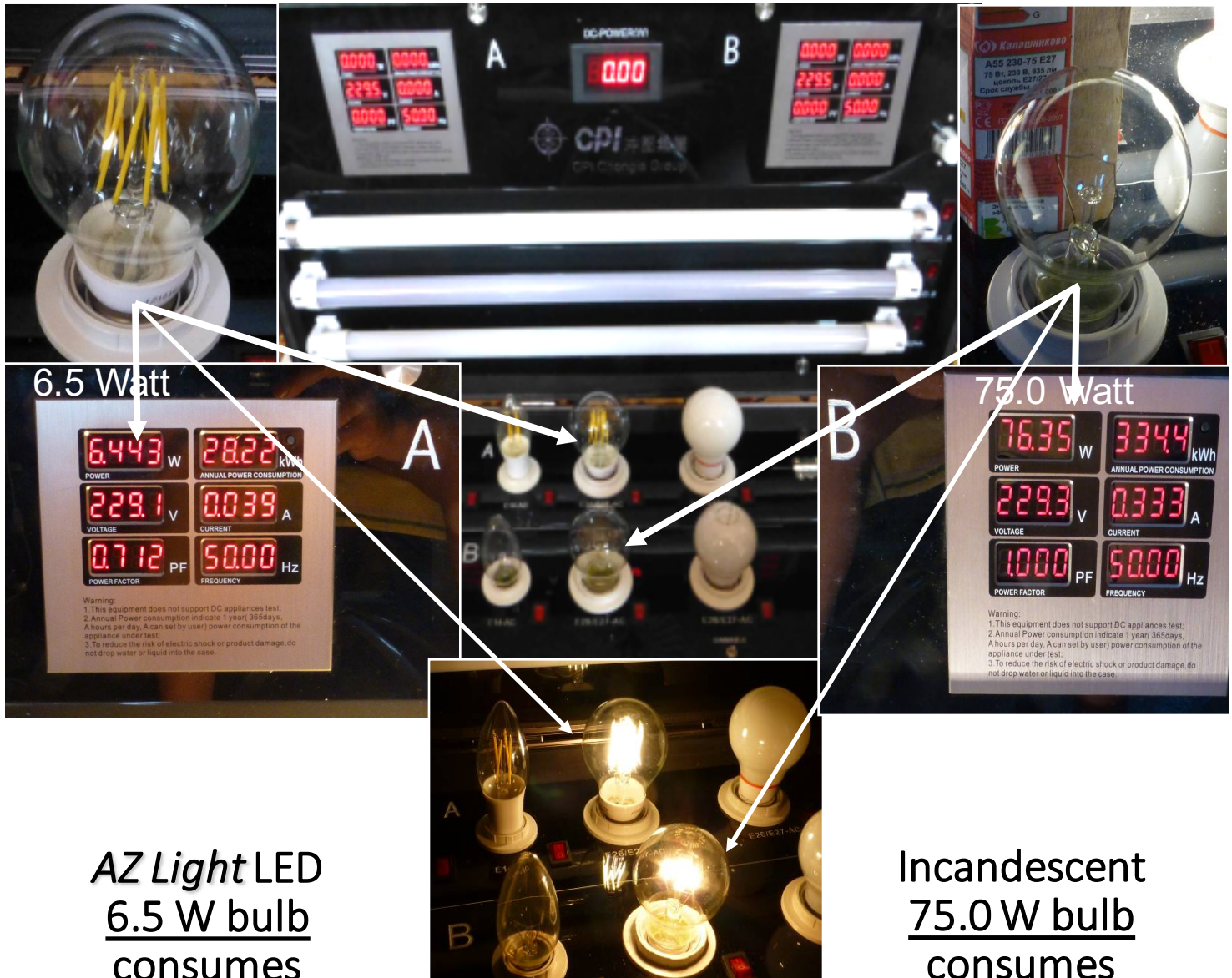
Wattage: 3.0 Watt  
Voltage: 120 VAC  
Frequency: 50-60 Hz  
Power Factor: > 0.6  
Lamp Current: 25 mA  
Dimmable: Available as an Option  
Starting Time: 0.5s

### Warnings and safety:

- Do not use in outdoor fixtures
- Not recommended for wet or damp locations
- Not for use in totally enclosed luminaires
- Before replacing, **turn off power** to avoid electrical shock or burn.



# Comparison of LED *AZ Light* 6.5 W and incandescent 75.0 W



*AZ Light* LED  
6.5 W bulb  
consumes  
28.22 kWh  
in 1 year working  
12 hours a day

With 0.11 cent  
per 1.0 kWh, the  
difference is  
\$36.75 – \$3.10 =  
\$33.65 a year

Incandescent  
75.0 W bulb  
consumes  
334.4 kWh  
in 1 year, working  
12 hours a day

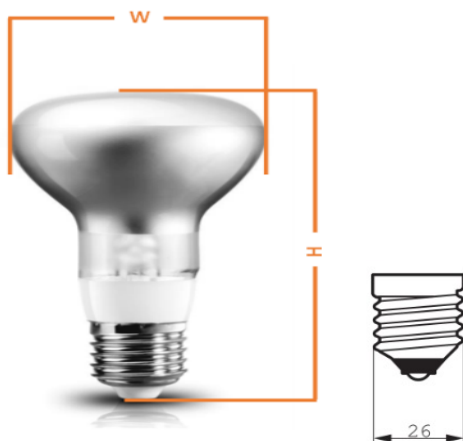


## Glass front, incandescent type PAR30 LED Bulb 8,0 Watt Equivalent up to 55.0-60.0 Watt incandescent bulb



Ordering Code:

**AZDD-PAR30-PL-E26-8,0-FRG-3.0K-US-RT**



E26

### Bulb dimensions:

Overall Length (H): 3.75"/95mm  
Diameter (W): 3.75"/95mm

**Design Patent pending**

### Key Features and Benefits:

- **100% replacement** of incandescent light bulb
- **Lowers electric** light bill up to **5 times** compared to incandescent light bulb
- **IP 56 – 65**
- **Very small** amount of heat produces
- **More** work hours - **25,000 Hours** Average Life time (Compared to incandescent: 1,000-2,000 hours)
- **Low** Pulsation light – **Less** eye fatigue, less stress
- **Free** from Ultraviolet and Infrared radiation
- **Free** from Mercury and Lead. **RoHS** certified
- **More** On/Off Switching cycles - 20000X+
- **Instant-On** with full light output
- **Less load** on electrical grid, **less** maintains

### General Characteristics:

Bulb type: Reflector  
Glass cover: Frosted  
Cap base: E26 – Medium Base  
Glass type: Flat glass with micro lenses  
Rated avg. life: > 25,000 hours  
(In use for 3 hours a day – 20 years+)

### Light Technical Characteristics:

Lumen output (Lm) : 560-680  
Lumen per Watt - Efficacy (Lm/W): 80  
Color T Code: 3000K  
Beam Angle: 120 degree

### Electrical Characteristics:

Wattage: 8.0 Watt  
Voltage: 100-240 VAC  
Frequency: 50-60 Hz  
Power Factor: > 0.8  
Lamp Current: 65 – 70 mA  
Dimmable: No  
Starting Time: 0.5s

### Warnings and safety:

- Do not use in outdoor fixtures
- Not recommended for wet or damp locations
- Not for use in totally enclosed luminaires
- Before replacing, **turn off power** to avoid electrical shock or burn.

## Glass front, incandescent type PAR30L LED Bulb 10,0 Watt Equivalent up to 65.0-70.0 Watt incandescent bulb



Ordering Code:

**AZDD-PAR30L-PL-E26-8,0-FRG-3.0K-US-RT**



E26

### Bulb dimensions:

Overall Length (H): 4.75"/120mm  
Diameter (W): 3.75"/95mm

**Design Patent pending**

### Key Features and Benefits:

- **100% replacement** of incandescent light bulb
- **Lowers electric** light bill up to **10-20 times** compared to incandescent light bulb
- **IP 56 – 65**
- **Very small** amount of heat produces
- **More** work hours - **25,000 Hours** Average Life time (Compared to incandescent: 1,000-2,000 hours)
- **Low** Pulsation light – **Less** eye fatigue, less stress
- **Free** from Ultraviolet and Infrared radiation
- **Free** from Mercury and Lead. **RoHS** certified
- **More** On/Off Switching cycles - 20000X+
- **Instant-On** with full light output
- **Less load** on electrical grid, **less** maintains

### General Characteristics:

Bulb type: Reflector  
Glass cover: Frosted  
Cap base: E26 – Medium Base  
Glass type: Flat glass with micro lenses  
Rated avg. life: > 25,000 hours  
(In use for 3 hours a day – 20 years+)

### Light Technical Characteristics:

Lumen output (Lm) : 760-820  
Lumen per Watt - Efficacy (Lm/W): 80  
Color T Code: 3000K  
Beam Angle: 120 degree

### Electrical Characteristics:

Wattage: 8.0 Watt  
Voltage: 100-240 VAC  
Frequency: 50-60 Hz  
Power Factor: > 0.8  
Lamp Current: 85 – 90 mA  
Dimmable: No  
Starting Time: 0.5s

### Warnings and safety:

- Do not use in outdoor fixtures
- Not recommended for wet or damp locations
- Not for use in totally enclosed luminaires
- Before replacing, **turn off power** to avoid electrical shock or burn.

## Glass front, incandescent type PAR38 LED Bulb 12,0 Watt Equivalent up to 75.0-85.0 Watt incandescent bulb



Ordering Code:

**AZDD-PAR38-PL-E26-12,0-FRG-3.0K-US-RT**



E26

### Bulb dimensions:

Overall Length (H): 5.52"/140mm  
Diameter (W): 4.75"/120mm

**Design Patent pending**

### Key Features and Benefits:

- **100% replacement** of incandescent light bulb
- **Lowers electric** light bill up to **10-20 times** compared to incandescent light bulb
- **IP 56 – 65**
- **Very small** amount of heat produces
- **More** work hours - **25,000 Hours** Average Life time (Compared to incandescent: 1,000-2,000 hours)
- **Low** Pulsation light – **Less** eye fatigue, less stress
- **Free** from Ultraviolet and Infrared radiation
- **Free** from Mercury and Lead. **RoHS** certified
- **More** On/Off Switching cycles - 20000X+
- **Instant-On** with full light output
- **Less load** on electrical grid, **less** maintains

### General Characteristics:

Bulb type: Reflector  
Glass cover: Frosted  
Cap base: E26 – Medium Base  
Glass type: Flat glass with micro lenses  
Rated avg. life: > 25,000 hours  
(In use for 3 hours a day – 20 years+)

### Light Technical Characteristics:

Lumen output (Lm) : 900-960  
Lumen per Watt - Efficacy (Lm/W): 80  
Color T Code: 3000K  
Beam Angle: 120 degree

### Electrical Characteristics:

Wattage: 12.0 Watt  
Voltage: 100-240 VAC  
Frequency: 50-60 Hz  
Power Factor: > 0.8  
Lamp Current: 100 – 110 mA  
Dimmable: No  
Starting Time: 0.5s

### Warnings and safety:

- Do not use in outdoor fixtures
- Not recommended for wet or damp locations
- Not for use in totally enclosed luminaires
- Before replacing, **turn off power** to avoid electrical shock or burn.



***Catalog of LED Light Bulbs  
that are 100% replicas  
of Incandescent Light Bulbs***

**These bulbs will lower electric bill up to 90%**



is an industry leader in providing the market with innovative, energy efficient, money saving LED lights.

***AZ Light***

3349 Sheridan Drive,

Buffalo, New York, 14226

Office: (716) 837-5533 Cell: (716) 239-5181

Fax: (716) 834-0905

[info@az-light.com](mailto:info@az-light.com)

**[WWW.AZ-LIGHT.COM](http://WWW.AZ-LIGHT.COM)**